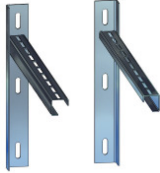
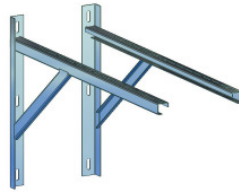


DW80 - Bauteile



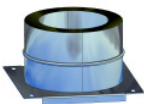
Wandkonsole Profilschiene 600 lg.



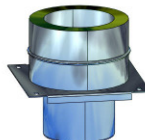
Wandkonsole Profilschiene 750/1000 lg.



Wandkonsole 50 / 50-100



Fundamentverankerung m. Ablauf



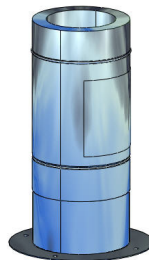
Fundamentverankerung m. abnehmb. Rußtopf



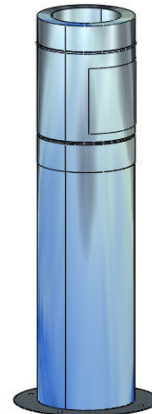
Stützfuß m. Ablauf 500 lg.



Stützfuß m. Ablauf 1000 lg.



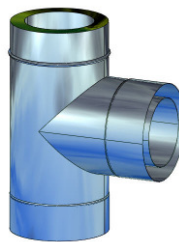
Stützfuß m. Kondensatopf 500 lg.



Stützfuß m. Kondensatopf 1000 lg.



Prüföffnung

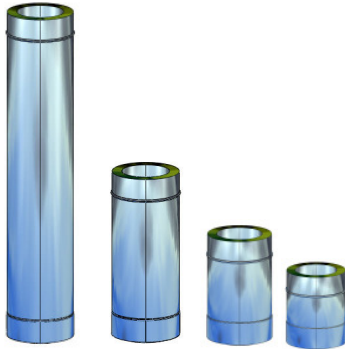


Feuerungsanschluß 87°

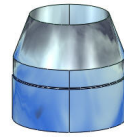


Feuerungsanschluß 45°

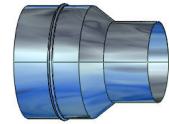
DW80 - Bauteile



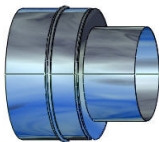
Rohrelement 1080 / 540 / 360 / 270 lg.



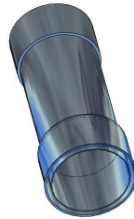
Mündungsabschluß



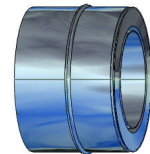
Übergang DW-EW „konisch“



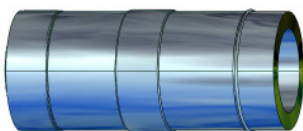
Übergang DW-EW „gerade“



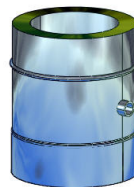
schiebbares Wandfutter m. einw. Reduzierstück



Endstück m. innenliegenden Wandfutter



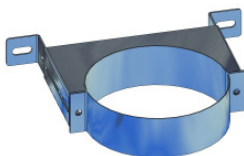
Längenausgleichselement



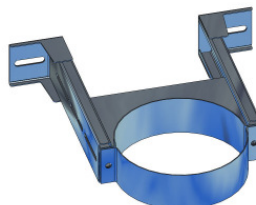
Rohrelement 270 lg. m. Kondensatfalle



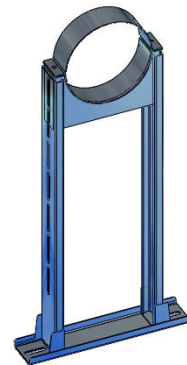
Rohrelement 270 lg. m. Messöffnung



Wandhalterung 50-100 mm



Wandhalterung -250/ -400 mm

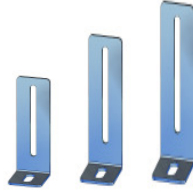


Wandhalterung -750 mm

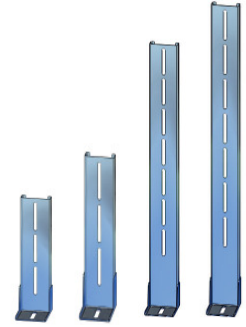
DW80 - Bauteile



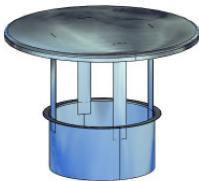
Wandhalterung „Basisteil“



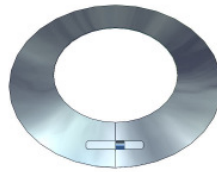
Wandhalterung „Seitenteil“ 130 / 180 / 205 lg.



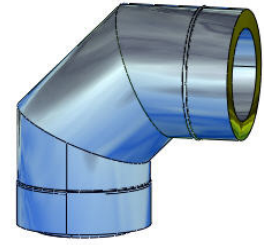
Wandhalterung „Seitenteil“ 300 / 360 / 450 / 550 lg.



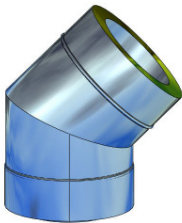
Regenhaube



Regenkragen „flach“



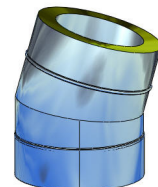
Bogen 90°



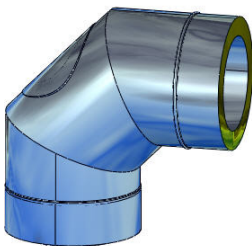
Bogen 45°



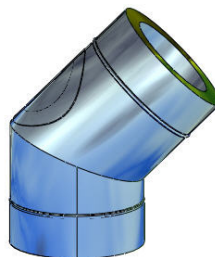
Bogen 30°



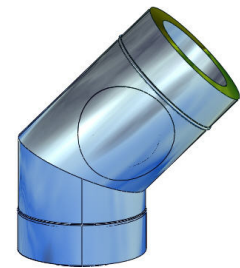
Bogen 15°



Bogen 90° m. Reinigung

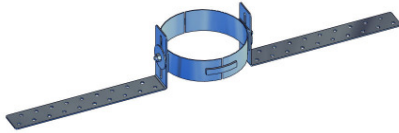


Bogen 45° m. Reinigung

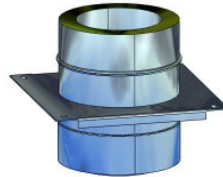


Bogen 45° m. Reinigung seitlich

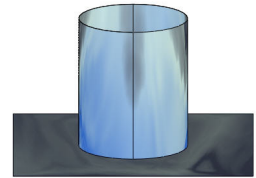
DW80 - Bauteile



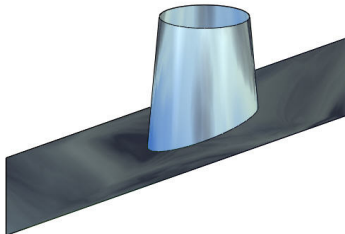
Dachsparrenhalterung verstellbar



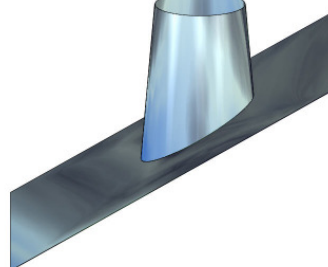
Zwischenstütze



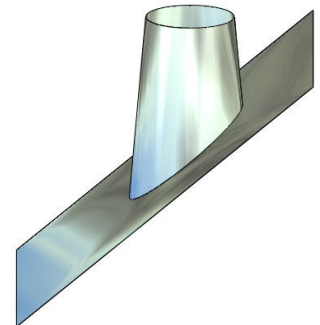
Dachdurchführung f. Flachdach



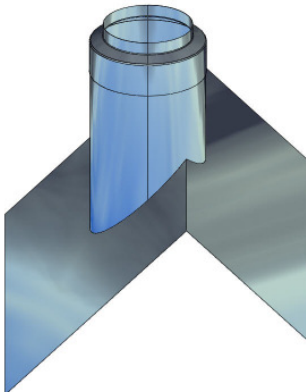
Dachdurchführung 15-25° mit/ohne Blei



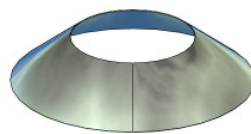
Dachdurchführung 25-35° mit/ohne Blei



Dachdurchführung 35-45° mit/ohne Blei



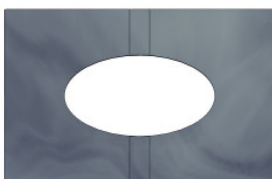
Dachdurchführung für First



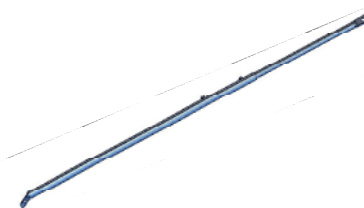
Regenkragen „hoch“



Zentrierplatte mit Hinterlüftung



Zentrierplatte



Teleskopabspannstange

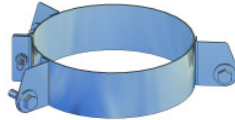


Abspannschelle f. Teleskopstangen

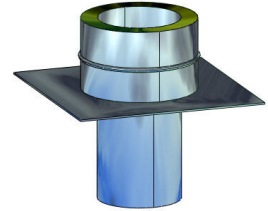
DW80 - Bauteile



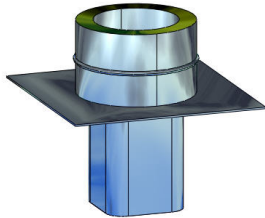
Telekopstangenhalterung „stabil“



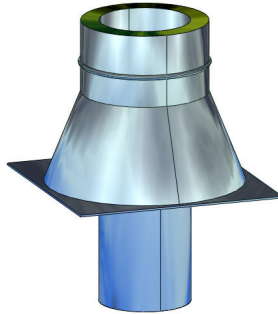
Seilbasspannschelle



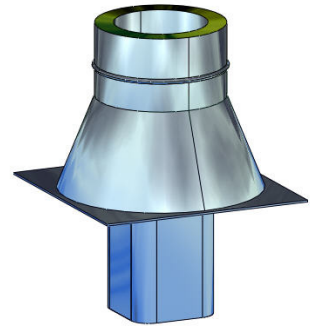
Grundplatte f. Kaminerrhöhung m. rundem Einschub



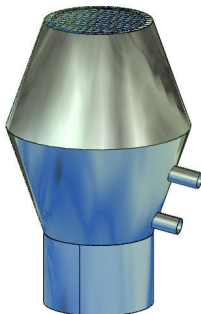
Grundplatte f. Kaminerrhöhung m. eckigem Einschub



Grundplatte f. Kaminerrhöhung m. rundem Einschub „stabil“



Grundplatte f. Kaminerrhöhung m. eckigem Einschub „stabil“



Deflektorhaube



Kombibauteil „Prüföffnung m. F-Anschluß“