

## EW80 - Bauteile



Rohr 1080 lg.



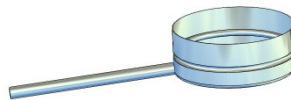
Rohr 1080 lg. beids. gemufft



Rohr 540 lg.



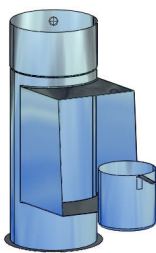
Rohr 270 lg.



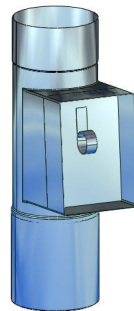
Kondensatschale m. seitr. Ablauf



Prüföffnung 14/20 m. Kondensatsperre



Prüföffnung 14/20 m. Boden u. Wasserschale



Prüföffnung 14/20 m. Doppelmuffe u. Kondensatsperre



Prüföffnung „rund“



Feuerungsanschluß 87°



Feuerungsanschluß 15°



Feuerungsanschluß 30°

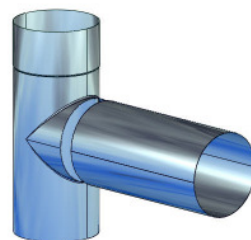
## EW80 - Bauteile



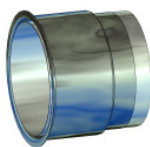
Feuerungsanschluß 45°



Feuerungsanschluß 87° m. schiebbarem Wandfutter



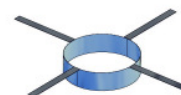
Feuerungsanschluß 87° m. abnehmb. Stutzen



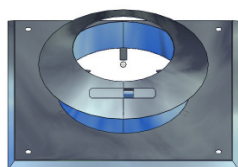
Wandfutter



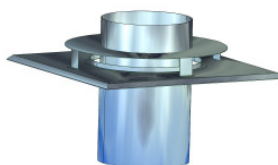
Wandfutterdeckel



Abstandshalter



Abdeckung m. Regenkragen



Abdeckung „universal“



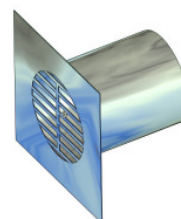
Bogen 15°



Bogen 30°

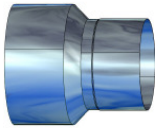


Isolierschale

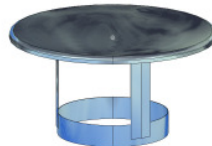


Lüftungsgitter 120ø

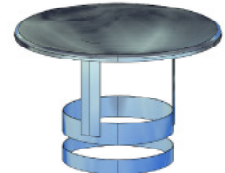
## EW80 - Bauteile



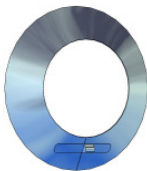
Reduzierung



Regenhaube



Regenhaube abnehmbar m. Kette



Regenkragen



Kamintüre m. Schaft 80 lg.



Kamintüre m. Schaft 200 lg.